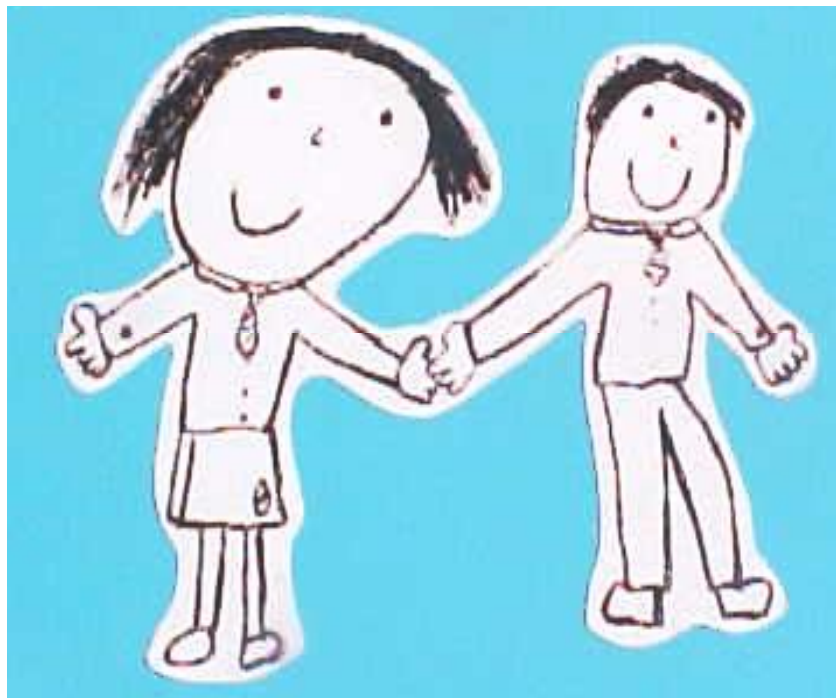


WEST WINDS PRIMARY SCHOOL



HOMework POLICY

Homework plays an important role in school and it is our policy that all pupils receive homework. It is a useful means of consolidating and extending the work done in class and it develops qualities of self-discipline and independence. It also provides parents with the opportunity to be involved in their child's education.

All children are expected to do homework. This may be formal in the case of written exercises or informal e.g. the gathering of information on a given topic.

Homework is regarded as a powerful link between home and school and parental attitude to homework is of vital importance. It is hoped that parents will support and encourage their child by:

- a) Providing a quiet place for their child to work, preferably at a table / desk, away from distractions.
- b) Encouraging their child to always do their best work.
- c) Praising their child for work well done.
- d) Encouraging them to do homework when they come in from school, instead of leaving it until late at night.
- e) Showing an interest in their child's work, offering help and support where necessary, but not doing it for them!
- f) Checking that they have completed their work to a satisfactory level and signing it.

All homework will be marked and in many instances given a written comment, with stickers / stampers being awarded for deserving work.

The following is intended as a guide to homework which will be set for each class in school. All homework will be consolidation and extension activities, related to work currently being undertaken in school.

In the Foundation stage home learning will be more informal with the emphasis being on practical fun activities.

PRIMARY 1

Each Monday children will take home their home learning pack for the week ahead. This will contain read at home books to be shared at home and short fun activities related to what the children have been doing at school. These activities will often be games or simply talking or finding out more about a topic. As the year progresses more simple writing or drawing activities will be introduced. These activities can be worked at over the course of the week and home learning packs are then returned to school on a Friday morning. (10 / 15 minutes per night)

P2 up will have spellings to learn each night, using the Look, Say, Cover, Write, Check method. The number of spellings per week will depend on the child's ability group within the class. Children will then be tested on these each Friday. P2 to P7 will have a written home work every Monday to Thursday. This may be English, Maths or topic related and will be differentiated according to ability. Sometimes home work may be an information finding exercise.

PRIMARY 2 - 15 minutes per night

PRIMARY 3 - 20 minutes per night

PRIMARY 4 - 25 minutes per night

PRIMARY 5 - 30 minutes per night

PRIMARY 6 - 45 minutes per night

PRIMARY 7 - 45 minutes per night

In addition to the above all classes will have reading each night, in the form of a read at home book.

The times stated are intended as a guide and the school recognises that some children will take longer to complete home works than others. If a parent / guardian frequently finds that a child cannot complete tasks within the suggested time, then please bring this to the attention of the class teacher. Similarly if a child is struggling with their homework please inform their teacher. There may be occasions when children are asked to repeat homework if their teacher feels that they have not

completed it to the best of their ability. It is hoped that parents would regard this as justifiable.

If a child is unable to do their homework for whatever reason, please send in a note to the class teacher. If a child frequently forgets to bring their homework to school they may be asked to complete it during playtime. In Key Stage 2 children who fail to complete / hand in homework on three occasions will remain in school for detention the next week.